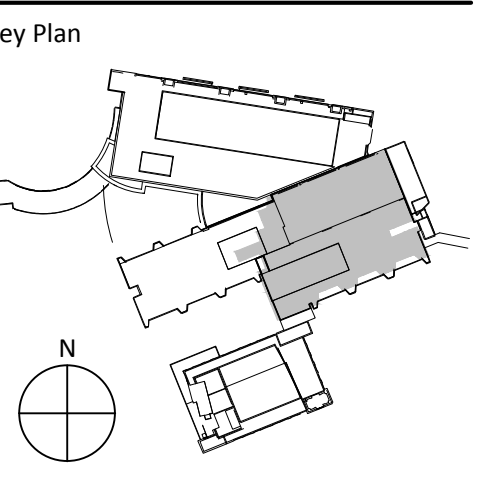
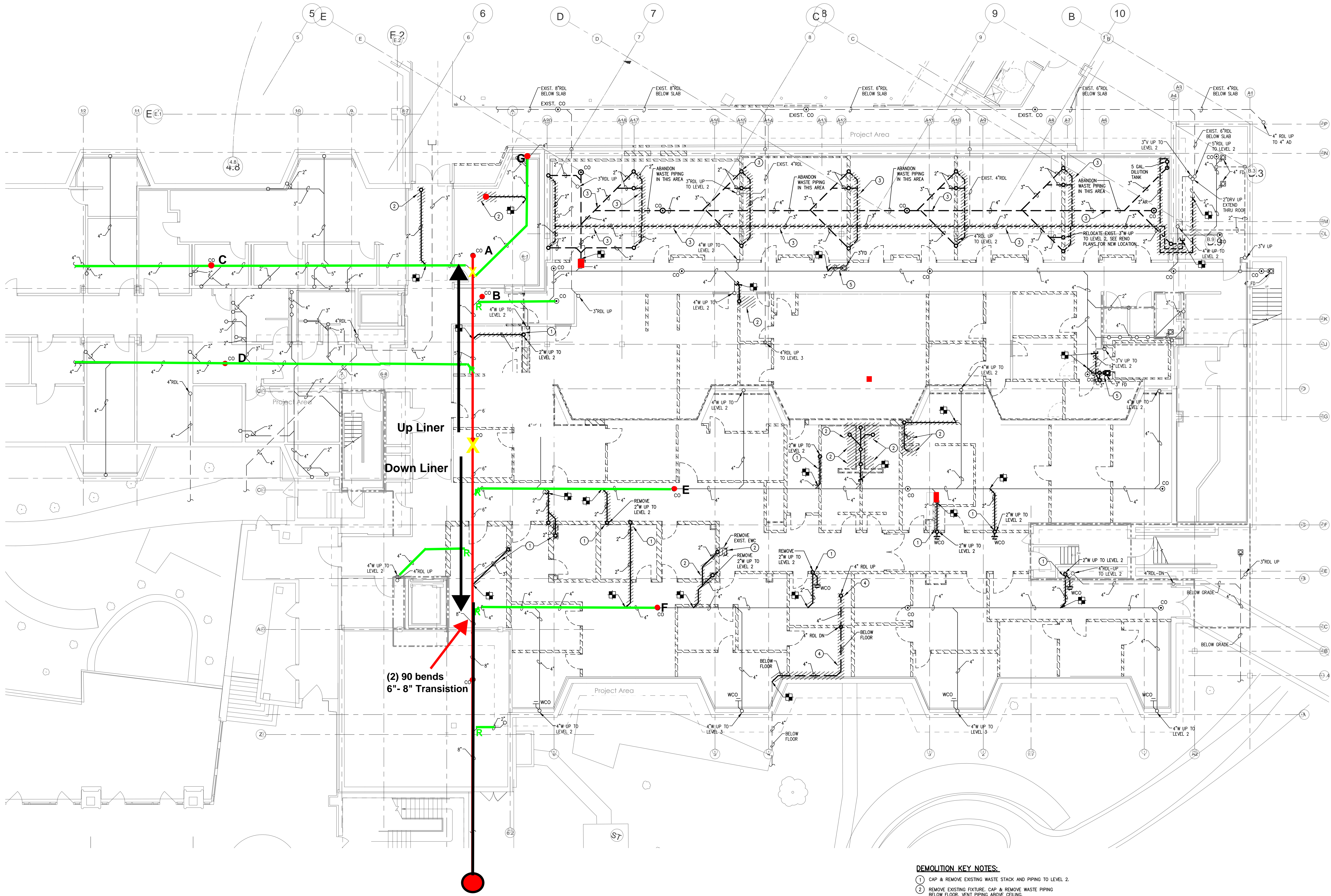


Duke University Health System
Clinical Lab Relocation to Wadsworth

FPDC #3471HSDC
2351 Erwin Road, Durham, NC 27705



Revisions



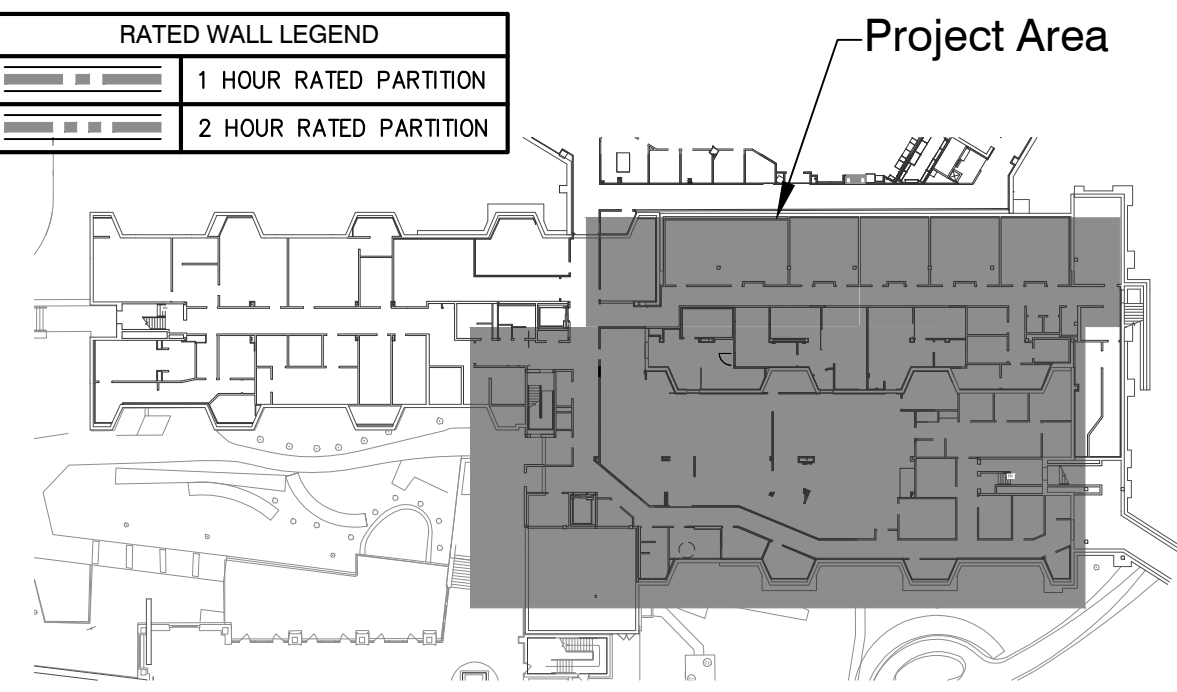
Duke Wadsworth Main Line CIPP Rehab Plan.
2 Liners
6 Connections

- DEMOLITION KEY NOTES:**
- 1 CAP & REMOVE EXISTING WASTE STACK AND PIPING TO LEVEL 2.
 - 2 REMOVE EXISTING FIXTURE, CAP & REMOVE WASTE PIPING BELOW FLOOR, VENT PIPING ABOVE CEILING.
 - 3 CAP & ABANDON EXISTING WASTE PIPING BELOW FLOOR, REMOVE VENT PIPING ABOVE CEILING.
 - 4 CAP & REMOVE EXISTING ROL PIPING BELOW FLOOR.
 - 5 REMOVE EXISTING FLOOR DRAIN, CAP & REMOVE WASTE PIPING BELOW FLOOR, VENT PIPING ABOVE CEILING.

- CIPP Key Notes.**
1. Access CO-A,B,C,D, E, F.
 2. Clean and verify Picote cutter path.
 3. Access and cut excavation pit pipe.
 4. Install "Wye" PVC temporary piping.
 5. Clean and descale pipe to be lined.
 6. Verify all diameter changes.
 7. Test Max cutter and camera access.
 8. Flow check & isolate fixtures.
 9. Create bypass pumping plan.
 10. Take PTBLS.
 11. Prep materials.
 12. Install upstream liner.
 13. Cure liner.
 14. Reinstate connections.

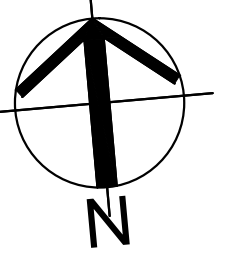
- Pipe to be lined.
- Connecting live flow pipe.
- Clean Out
- R Robotic Reinstatement
- X Excavation Area 4x4
- Manhole

RATED WALL LEGEND	
	1 HOUR RATED PARTITION
	2 HOUR RATED PARTITION



REFER TO ARCHITECTURAL PLANS FOR PROJECT PHASING.

Key Plan
No Scale



© 2015 RND Architects, PA.
These drawings and specifications are instruments of service and as such remain the property of the architect. Their use is restricted to the original use for which they were prepared and publication thereof is expressly limited to such use. No use, reproduction or publication by any method, in whole or in part, is prohibited.

Original drawing is 36" x 48". Do not scale contents of this drawing.
Project Number: 14-226.1
Drawn: VJSP
Checked: JJB
Date: 08/18/15

Sheet Title
Waste & Vent Plumbing Demolition Plan - Level 1 - Wadsworth

Sheet Number
W-P11